

Pierre Bourdieu and Australian social policy research - some opportunities and challenges

SPRC lunchtime seminar

Social Policy Research Centre, University of New South Wales, Sydney

13 September 2011

Dina Bowman

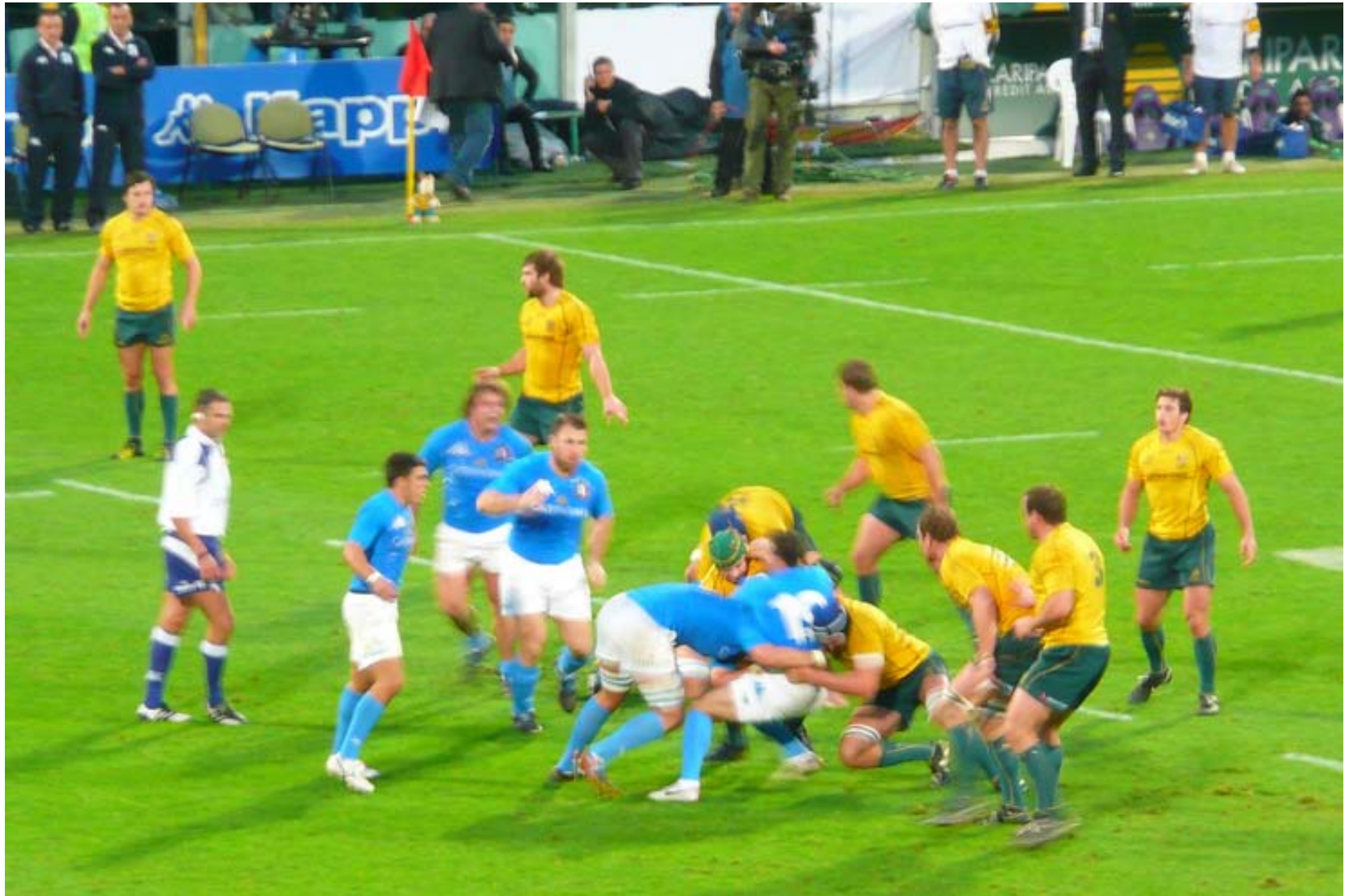
Brotherhood of St Laurence; University of Melbourne

dbowman@bsl.org.au dinab@unimelb.edu.au

Overview



Field, habitus, and capital



Misrecognition & symbolic violence



Common sense and classifications



Challenging poverty pornography





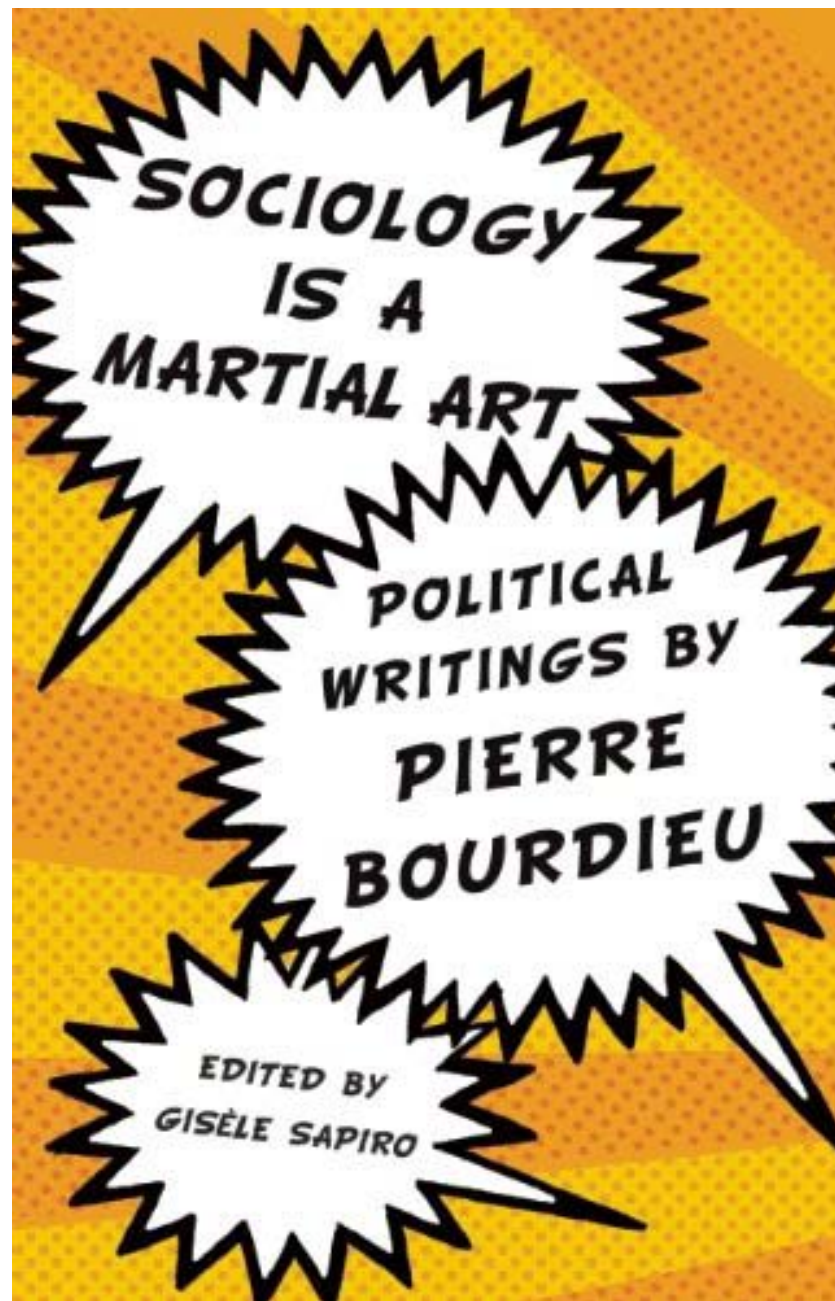
‘ we must relinquish the single, central, dominant, in a word, quasi-divine, point of view that is all too easily adopted by observers We must work instead with the multiple perspectives that correspond to the multiplicity of coexisting, and sometimes directly competing, points of view.’ (Bourdieu, 1999: 3–4)

Social research and social policy

‘In general, orthodox policy research relies upon a positivist epistemology where the main task of the researcher is one of discovering objective facts and presenting them in a descriptive format in the expectation that policy makers will take notice and act accordingly.’ (Marston 2002: 302)

Theory and practice





Sociology is a martial
art
<http://www.youtube.com/watch?v=Csbu08SqAuc>

•<http://www.youtube.com/watch?v=xFuAOP1H6Go&feature=related> at 6.06



The artist is Manny Hernandez, who was diagnosed with Type 1 diabetes in late 2002. Hernandez describes his artwork: 'These are used test strips and parts used while changing infusion sets for my insulin pump. The strips were just a few days' worth of them. The other (pointy) items were a few months' worth. Please join www.TuDiabetes.com - a social network for people touched by diabetes'.

Questions / comments?

dinab@unimelb.edu.au

dbowman@bsl.org.au

Image credits

- The Consumerist (2007) 'Sale Window', *Flickr*. Last accessed 23/6/10
<http://www.flickr.com/photos/consumerist/418216128/>
- [Orangeek](#) (2010) 'Italia Australia Rugby' *Flickr*. Last accessed 9/11/11
<http://www.flickr.com/photos/orangeek/5192374415/>
- JanahPhotography (2010) 'Unemployed and Homeless', *Flickr*. Last accessed 3/6/11
<http://www.flickr.com/photos/janahphoto/4837138908/>
- Yjoseph (2010) File time *Flickr* last accessed 11/9/11 <http://www.flickr.com/photos/yjoseph/4249757589/>
- Duncan McNicholl (2010)Perspectives of poverty' last accessed 10/9/11
http://waterwellness.files.wordpress.com/2010/09/poorbauleniilores_thumb1.jpg?w=215&h=319
http://waterwellness.files.wordpress.com/2010/09/richbauleniilores_thumb1.jpg?w=231&h=319
- CNDHarv (2009) 'Multiple perspectives' last accessed 12/9/11
http://www.flickr.com/photos/cdn_harv/4222204285/
- Cover image Gisele Sapiro (ed) (2010) *Sociology is a Martial Art: Political Writings by Pierre Bourdieu*
[http://ecx.images-amazon.com/images/I/51z3ja%2BOp3L_SL500_AA300 .jpg](http://ecx.images-amazon.com/images/I/51z3ja%2BOp3L_SL500_AA300.jpg)
- Unknown last accessed 10/9/11
http://3.bp.blogspot.com/_L6d_3MqV48I/TRk2QdQPT0I/AAAAAAAABIE/gD0KaBkldr8/s320/bourdieu12.jpg
- Hernandez, M. (2008) 'Hope: Diabetes Supplies Art', *Flickr*. Last accessed 9/9/11
<http://www.flickr.com/photos/askmanny/2654340124/in/pool-78162295@N00/>
- References available on request